



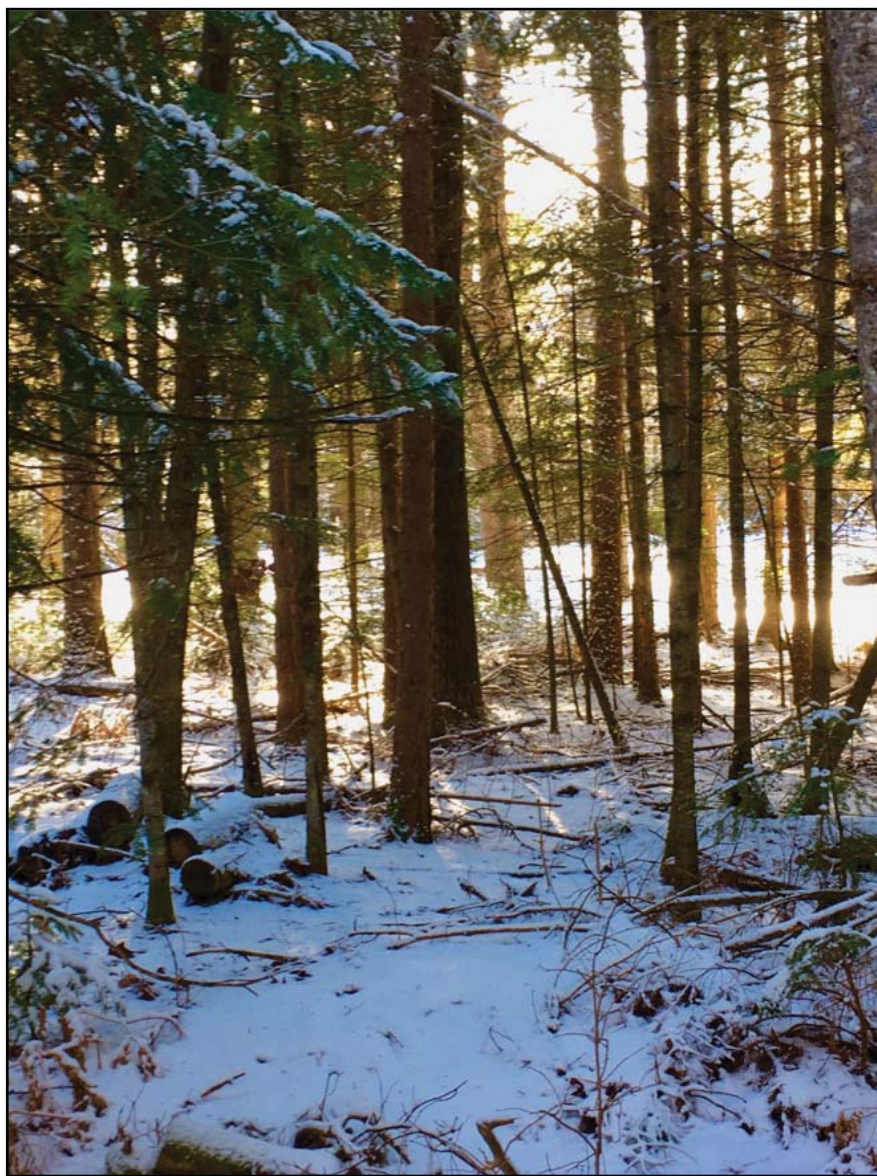
It's Time to Conquer Winter

How to easily master color theory's power, I promise.

October 16, 2021



Photo Reference





It's Time to Conquer Winter

How to easily master color theory's power, I promise.

October 16, 2021



Sketch on the Watercolor Paper

Please draw my pencil drawing as you see it here on a quarter-sheet of watercolor paper before viewing and painting Watercolor Escape Saturday video.





It's Time to Conquer Winter

How to easily master color theory's power, I promise.

October 16, 2021

Value Study



October 16, 2021

VALUES

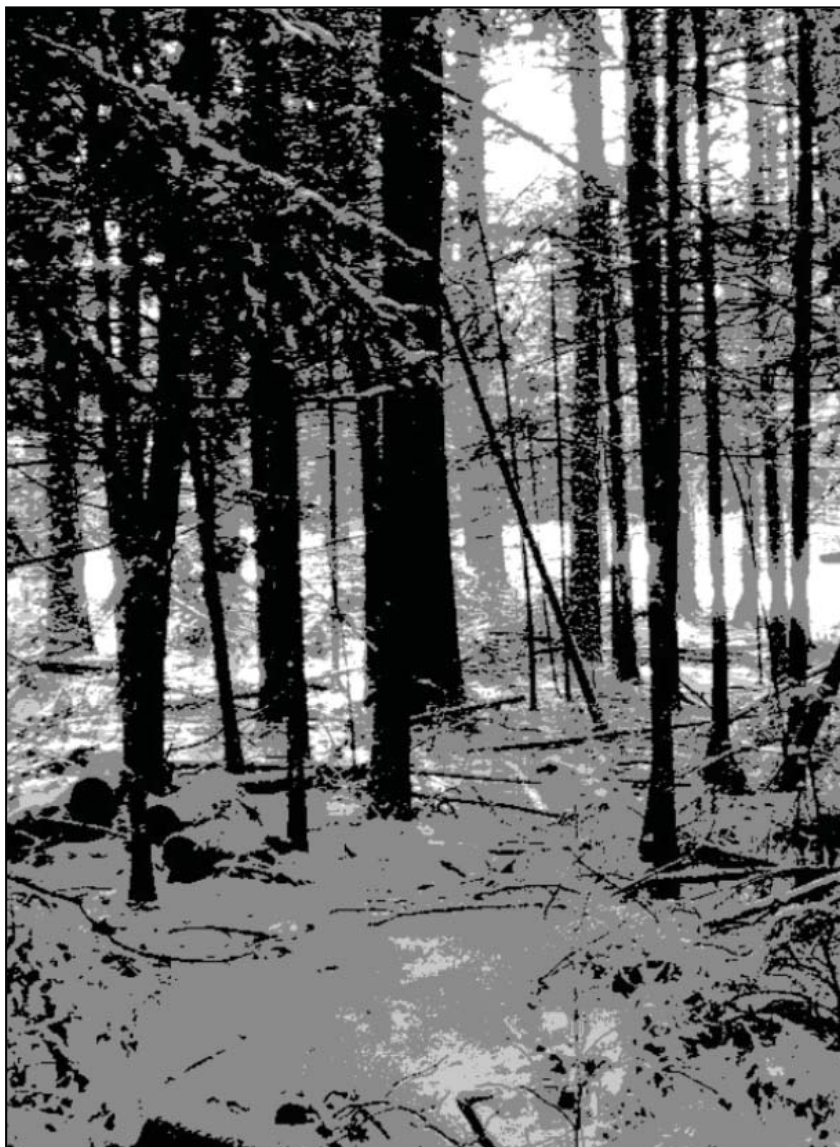
I found an app to help you understand values called Notanizer. Sometimes a scene can be so colorful with textures you lose sight of value. Well, this app will help you see and understand values better. Whether you are in the studio or out doing a day of plein air painting. Easy to use on the fly, sitting at the doctor's office, or at your drawing table. I like it because it gives you flexibility allowing you to save your options in your camera roll. The app costs \$1.99.



Here's a video link by *Inspired To Paint*. They share a simple way to use this great app. <http://bit.ly/popovich-Notanizer>

Any artist will benefit from seeing their work in a different light. Notanizer is that light.

The app is available for iOS and Android operating systems.





It's Time to Conquer Winter

How to easily master color theory's power, I promise.

October 16, 2021



Materials

Here are the paints, paper, and brushes I am going to use in this watercolor paint-along demonstration. For your convenience, I have linked them to Amazon, DickBlicks, and Cheap Joe's. You can find more in-depth information on my tried and true art supplies along with direct links to products at my website.

Supplies

- 300 lb Indigo cold press watercolor paper
- Medium or Hard Toothbrush
- Natural Sponge
- Toweling Paper

Paints (tube paints only)

Please Note: I used QoR Modern Watercolors for all of the below color swatches. I also recommend these brands: Holbein, Winsor & Newton Professional (NOT Cotman), Blick Artists' Watercolors, or Royal Talens: Van Gogh, or Rembrandt.



Sap Green



Magamese Blue



Winsor & Newton Designers Permanent White



Brown Madder or Alizarin Crimson



Ultramarine Blue



Raw Sienna



Cobalt Blue

Key Learnings

Subject

This photo is from my personal library which was taken out the backdoor of our log cabin. I didn't have to walk too far for inspiration! I captured it during the Golden Hour, the last hour before sunset. It was late March after a light snowfall.

I chose a snow scene to talk about the temperature of snow in relationship to the rest of the landscape. I selected a palette of three blues to demonstrate along with some complementary colors to complete The color scheme.

This scene has a wonderful abstract quality which I'm always telling my students to look for when choosing something to paint. Look at the light and dark patterns closely (checkout the supplied value photo), choose how the trees are to be positioned according to good composition and not nature. And remember above all you are painting a painting not the photograph. You can rearrange things to where you have a better composition and declutter nature a bit.

What You Will Walk Away With

1. How to handle the temperature of snow or anything white.
2. Get a grasp of handling the background in a very abstract way to describe the mass of trees.
3. Don't over mix—instead, let the paints blend on the paper and work their magic. This teaches you patience.
4. Understand the timing in applying the watercolor.

"You are painting a painting not the photograph."

—Dale L Popovich IWS
American Watercolor Artist

Note about copyright: You have permission to use and paint with these reference materials, videos, and tools. But you don't have permission to use this as a teaching tool to instruct others – paid or free. Materials are not for resell. All content is copyright protected and may not be used for any purpose without the written consent of Dale L Popovich. If you would like to use the content for commercial purposes, whether for print, education, or on the web, please contact PopovichDale@gmail.com. Your finished painting cannot be used in an art competition or show. This is solely used as a learning tool. **AFFILIATE DISCLOSURES** - Amazon: As an Amazon Associate, I earn from qualifying purchases.